

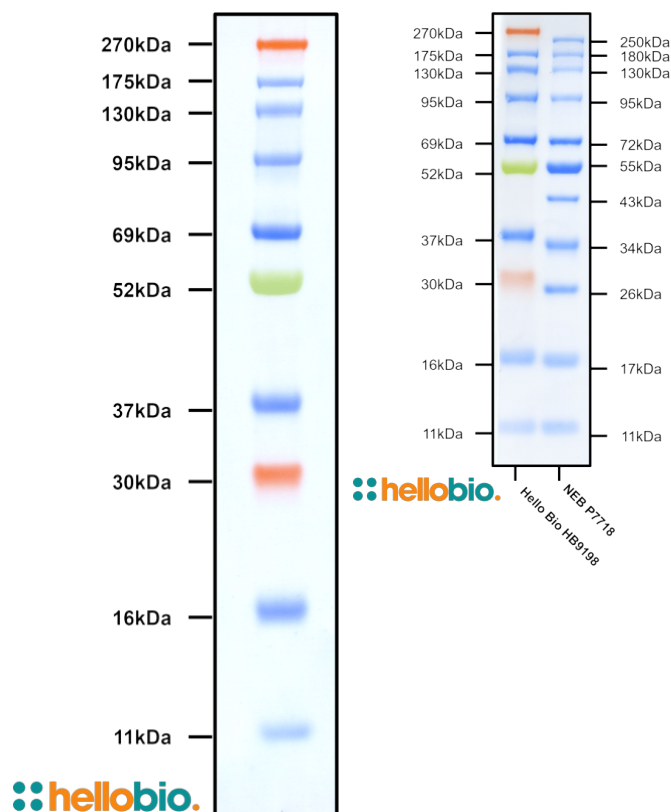
DATASHEET

Prestained Protein Ladder (11 – 270 kDa)

Product overview

Name	Prestained Protein Ladder (11 – 270 kDa)
Cat No	HB9198
Biological description	Dual color protein broad range protein ladder used for estimated the molecular weight of unknown proteins in SDS-PAGE and Western Blotting. Contains 10 proteins of known molecular weights coupled to chromophores for easy visualisation.
Applications	WB, SDS-PAGE
Description	Dual color broad range protein ladder

Images



Biological Data

Application notes	We recommend loading between 2µl and 5µl per lane of a polyacrylamide gel. There is no need heat, reduce or dilute in sample buffer before use.
--------------------------	---

Solubility & Handling

Storage instructions	-20 °C
Storage buffer	62.5 mM Tris-H ₃ PO ₄ (pH 7.5), 2% SDS, 1 mM EDTA, 10 mM DTT, 1 mM sodium azide, 33% glycerol

Important

This product is for RESEARCH USE ONLY and is not intended for therapeutic or diagnostic use. Not for human or veterinary use

References

Western blot: technique, theory, and trouble shooting.

Mahmood T et al (2012) North American journal of medical sciences 4

PubMedID

[23050259](#)
