

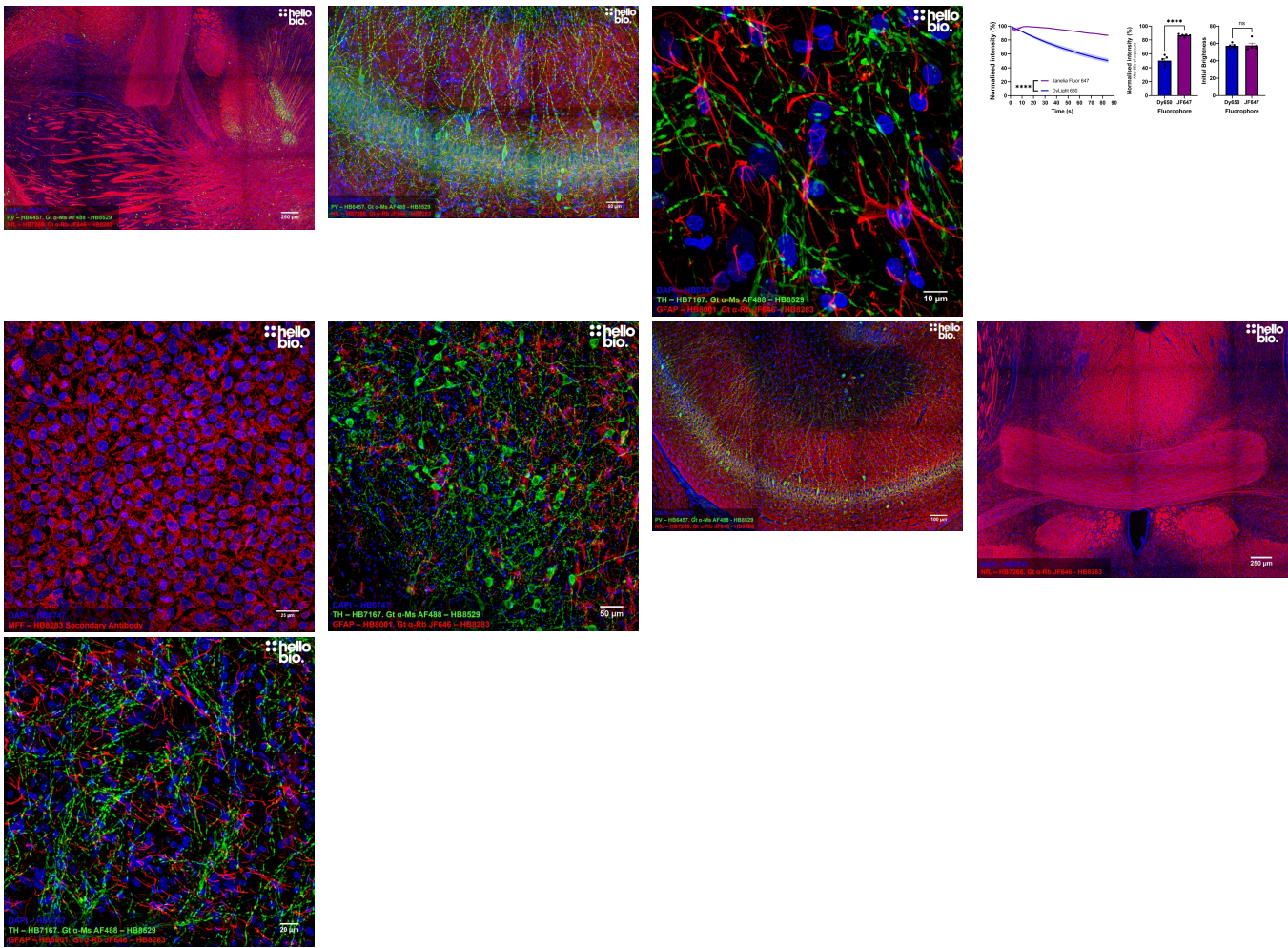
DATASHEET

Goat Anti-Rabbit IgG H&L (Janelia Fluor® 646) preadsorbed ValidAb™

Product overview

Name	Goat Anti-Rabbit IgG H&L (Janelia Fluor® 646) preadsorbed ValidAb™
Cat No	HB8283
Host	Goat
Clonality	Polyclonal
Target	Rabbit IgG H&L
Conjugate	Janelia Fluor® reg 646
Description	Goat Anti-Rabbit IgG H&L Janelia Fluor® 646 secondary antibody. Part of the ValidAb™ range of highly validated, data-rich antibodies.

Validation data



Product information

Immunogen	Purified rabbit IgG
Purification notes	Immunogen affinity chromatography. Pre-adsorbed with human, mouse and rat serum proteins

Concentration	1mg/ml
Formulation	20% glycerol in PBS with 0.05% sodium azide and 1% recombinant albumin

Tested applications

Applications	ELISA, FACS and flow cytometry, ICC, IHC(IF)
IHC(IF) optimal concentration	1:300 to 1:2,000 dilution (0.5 - 3.3µg/ml). Optimise dependent upon assay. A good starting point is 1:500 (2µg/ml).
ICC optimal concentration	1:300 to 1:2,000 dilution (0.5 - 3.3µg/ml). Optimise dependent upon assay. A good starting point is 1:500 (2µg/ml).
Negative control	While this antibody has been cross-adsorbed to reduce non-specific binding it is still often worthwhile to conduct a control experiment where the primary antibody is omitted to give confidence that the staining pattern observed is specific.

Storage & Handling

Storage instructions	+4 °C
Important	This product is for RESEARCH USE ONLY and is not intended for therapeutic or diagnostic use. Not for human or veterinary use

References

Single-molecule localization microscopy.

Lelek M et al (2021) Nature reviews. Methods primers 1

PubMedID [35663461](#)

Nanoscale segregation of channel and barrier claudins enables paracellular ion flux.

Gonschior H et al (2022) Nature communications 13

PubMedID [36008380](#)
