

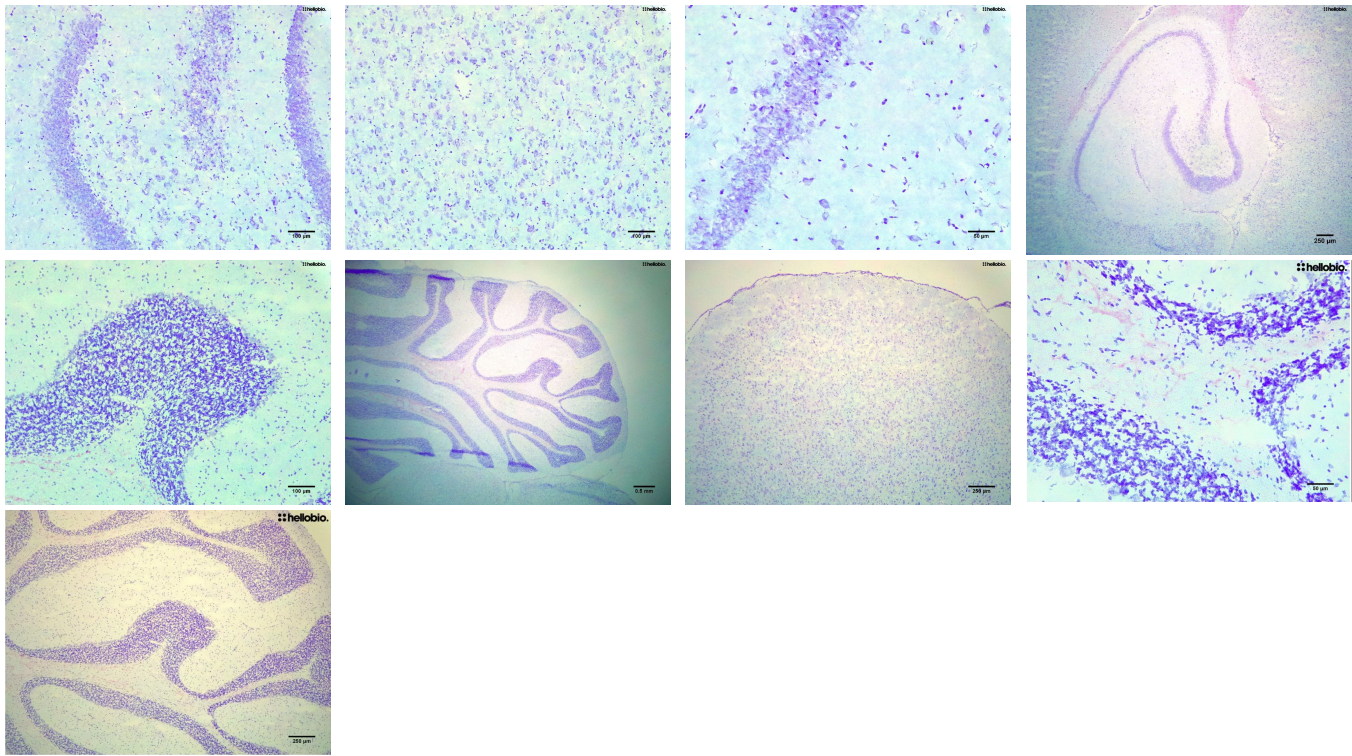
DATASHEET

Cresyl Violet Solution (1%)

Product overview

Name	Cresyl Violet Solution (1%)
Cat No	HB5608
Alternative names	Cresyl Echt Violet Solution (0.1%), Cresyl Violet Nissl substance stain solution
Biological description	Selectively stains Nissl substance in neurons on formalin fixed, paraffin-embedded tissue. Commonly used for identifying the basic neuronal structure in brain and spinal cord tissue. Nissl granules stain purple/ violet while nuclei of neuroglia and endothelial cells are slightly bluer than Nissl granules (violet to dark blue).
	Control Tissue: Cerebral Cortex
Biological action	Dyes & stains
Description	Stains Nissl substance in neurons on formalin fixed, paraffin-embedded tissue

Images



Biological Data

Application notes	Protocol:
	Working Solutions: This stain may be diluted up to 1:10 with deionized water just before use.

1. Deparaffinize and hydrate sections to distilled water.
2. Apply Cresyl Violet Acetate solution (or your Cresyl Violet Acetate working solution) to tissue for 3-5 minutes
3. Quickly rinse in 1 change of distilled water.
4. Dehydrate rapidly in absolute alcohol. Please note that alcohol may remove the stain from tissue over time.
5. Clear in 3 or 4 changes of xylene/xylene substitute and
6. Mount with synthetic resin.

#Protocol 1: Cresyl Violet staining of frozen brain sections

- 10µm fresh frozen sections were cut on a cryostat then fixed in 10% neutral buffered formalin for 10 minutes
- Sections were washed 3 times in dH₂O then incubated for 8 minutes in acidified cresyl violet solution (5 drops of 10% acetic acid in 30ml of cresyl violet solution)
- Sections were then differentiated in 96% alcohol briefly (acidified with 3 drops 10% acetic acid / 50ml alcohol) before being then washed in 100% alcohol and allowed to air dry
- Once dry, slides were incubated in xylene 3 times for 5 minutes and then mounted using DPX.

Note: If using paraffin embedded sections, deparaffinise the sections before hydrating into distilled water and then proceed with staining in Cresyl Violet solution

Solubility & Handling

Storage instructions Important

Room temperature
This product is for RESEARCH USE ONLY and is not intended for therapeutic or diagnostic use. Not for human or veterinary use

References

Cresyl violet: a red fluorescent Nissl stain.

Alvarez-Buylla A et al (1990) Journal of neuroscience methods 33

PubMedID [2232864](#)

Cresyl violet: a superior fluorescent lysosomal marker.

Ostrowski PP et al (2016) Traffic (Copenhagen, Denmark) 17

PubMedID [27621028](#)

Cresyl violet: a rapid, simple, easily interpretable stain for detecting *Pneumocystis carinii* in sputum.

Moas CM et al (1989) Southern medical journal 82

PubMedID [2474858](#)
