

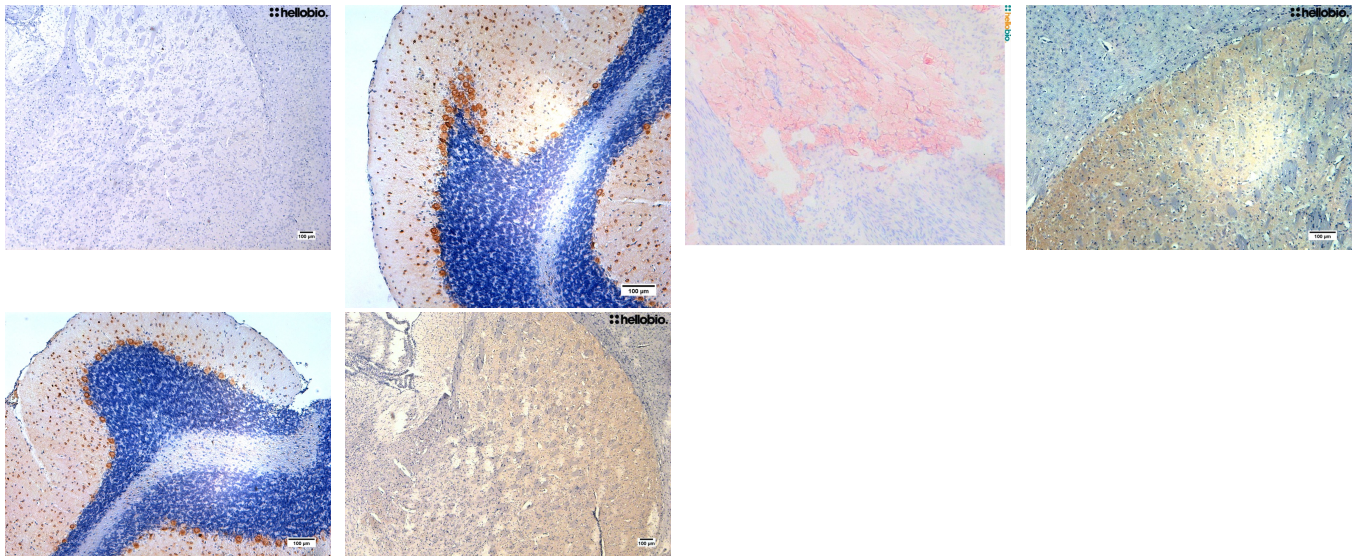
DATASHEET

Modified Mayer's Hematoxylin

Product overview

Name	Modified Mayer's Hematoxylin
Cat No	HB6189
Alternative names	Hematoxylin Solution (Mayer's, Modified)
Biological description	Hematoxylin is a nuclear stain with a deep blue-purple color. It is used as a counterstain for immunohistochemical or hybridization procedures that use colorimetric substrates (e.g. alkaline phosphatase or peroxidase.) It is a component of one of the most widely used histology stains: the H&E stain (Hematoxylin and Eosin stain).
Biological action	Dyes & stains
Description	Nuclear stain. Component of H&E stain.

Images



Biological Data

Application notes

Hematoxylin staining protocol for paraffin embedded sections

1. Incubate paraffin embedded sections in histoclear for 20 minutes
2. Incubate slides in 100% ethanol for 3 minutes
3. Incubate slides in 90% ethanol for 3 minutes
4. Incubate slides in 70% ethanol for 3 minutes
5. Rinse in tap water
6. Incubate in hematoxylin solution for 5 minutes
7. Rinse in running tap water for 5 minutes
8. Dip in acid alcohol (8-12 fast dips)
 - i. Recipe: 70% ethanol with 25mM HCl
9. Incubate slides in tap water for 2 minutes

10. Incubate slides in Scott's water for 2 minutes
 - i. Recipe: 10g/l MgSO₄, 0.66g/l NaHCO₃
 11. Dip and swish in 70% ethanol
 12. Dip and swish in 90% ethanol
 13. Incubate slides in 100% ethanol for 3 minutes
 14. Incubate slides in three changes of xylene for 1 minute per incubation
 - i. Carry out in a fume hood as xylene is extremely toxic
 15. Mount with DPX and leave to dry in a fume hood overnight before imaging
-

Solubility & Handling

Storage instructions Important

Room temperature

This product is for RESEARCH USE ONLY and is not intended for therapeutic or diagnostic use. Not for human or veterinary use

References

Tissue Processing and Hematoxylin and Eosin Staining

Feldman and Wolfe (2014) Methods Mol Biol 1180

PubMedID [25015141](#)

The Wonderful Colors of the Hematoxylin-Eosin Stain in Diagnostic Surgical Pathology

CHan (2014) Int J Surg Pathol 22(1)

PubMedID [24406626](#)

Hematoxylin and Eosin Staining of Tissue and Cell Sections

Fischer et al (2008) CSH Protoc 4986

PubMedID [21356829](#)
