

Hello Bio, Inc.
304 Wall St., Princeton, NJ 08540 USA

T. 609-683-7500
F. 609-228-4994

customercare-usa@hellobio.com



DATASHEET

Leupeptin hemisulfate

Product overview

Name	Leupeptin hemisulfate
Cat No	HB3958
Purity	>97%
Description	Reversible trypsin-like and cysteine proteases inhibitor

Biological Data

Biological description Reversible trypsin-like and cysteine proteases inhibitor.

Shows antioxidant and anti-inflammatory actions. It is commonly used to inhibit proteases present in tissue samples to prevent protein degradation.

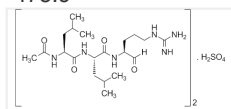
Solubility & Handling

Storage instructions +4 °C
Important This product is for RESEARCH USE ONLY and is not intended for therapeutic or diagnostic use. Not for human or veterinary use.

Chemical Data

Molecular Weight
Chemical structure

475.6



Molecular Formula
CAS Number
SMILES
InChiKey
Appearance

$C_{20}H_{38}N_6O_4 \cdot 0.5H_2SO_4$

103476-89-7

CC(C)C[C@H](NC(C)=O)C(=O)N[C@@H](CC(C)C)C(=O)N[C@@H](CCCNC(N)=[NH2+])C=O

CIPMKIHUGVGQTG-VFFZMTJFSA-N

White to off-white powder

References

Leupeptin, a Protease Inhibitor, Decreases Protein Degradation in Normal and Diseased Muscles

Libby and Goldber (534-6) Science 199(4328)

PubMedID [622552](#)

Cell-penetrating Inhibitors of Calpain

Mehdi (1991) Trends Biochem Sci. 16(4)

PubMedID [1877091](#)

Cell-penetrating Inhibitors of Calpain

