

Hello Bio, Inc.
304 Wall St., Princeton, NJ 08540 USA

T. 609-683-7500
F. 609-228-4994

customercare-usa@hellobio.com



DATASHEET

FLUO 3-AM

Product overview

| | |
|--------------------------|---|
| Name | FLUO 3-AM |
| Cat No | HB0772 |
| Biological action | Dyes & stains |
| Purity | >85% |
| Description | Cell permeable Ca ²⁺ sensitive fluorescent indicator |

Biological Data

| | |
|-------------------------------|---|
| Biological description | Cell permeable Ca ²⁺ sensitive fluorescent indicator ($K_d = 0.36 \mu\text{M}$). Metabolized by cytoplasmic esterases into FLUO-3. |
|-------------------------------|---|

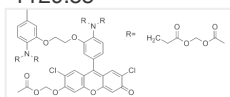
Solubility & Handling

| | |
|----------------------------|---|
| Solubility overview | Soluble in DMSO (0.9mg/ml) or water |
| Important | This product is for RESEARCH USE ONLY and is not intended for therapeutic or diagnostic use. Not for human or veterinary use. |

Chemical Data

Molecular Weight
Chemical structure

1129.85



Molecular Formula
CAS Number
PubChem identifier
SMILES

C₅₁H₅₀Cl₂N₂O₂₃

121714-22-5

5086914

CC1=CC(=C(C=C1)N(CC(=O)OCOC(=O)C)CC(=O)OCOC(=O)C)OCCOC2=C(C=CC(=C2)C3=C4C=C(C(=O)C=C4OC5=CC(=C(C=C5)Cl)OCOC(=O)C)Cl)N(CC(=O)OCOC(=O)C)CC(=O)OCOC(=O)C

References

Loading and localization of Fluo-3 and Fluo-3/AM calcium indicators in sinapis alba root tissue.

Tretyn A *et al* (1997) Folia Histochem Cytobiol 35(1)

PubMedID [9090510](#)

Functional fluo-3/AM assay on P-glycoprotein transport activity in L1210/VCR cells by confocal microscopy.

Orlicki *et al* (2004) Gen Physiol Biophys 23(3)

PubMedID [15638123](#)

Measurement of the dissociation constant of Fluo-3 for Ca²⁺ in isolated rabbit cardiomyocytes using Ca²⁺ wave characteristics.

